



International Journal of Innovative Research in Science Engineering and Technology (IJIRSET)

(A Monthly, Peer Reviewed, Refereed, Scholarly Indexed, Open Access Journal)



Impact Factor: 8.699

Volume 15, Issue 3, March 2026

Deep Learning Fundus Image Analysis for Early Detection of Diabetic Retinopathy

Vemulakonda Sowjanya¹, Shaik Tanveer², Yallavula Mahesh Reddy³, Settipalli Disanth⁴,
Padavala Anantha Srinivas⁵

Asst. Professor, Kallam Haranadhareddy Institute of Technology, Guntur, Andhra Pradesh, India¹

U.G. Students, Department of CSE (Data Science), Kallam Haranadhareddy Institute of Technology, Guntur,
Andhra Pradesh, India²⁻⁵

ABSTRACT: Diabetic Retinopathy (DR) remains one of the most common causes of preventable blindness, particularly among individuals with long-term diabetes. A major challenge in managing this condition is that its early stages often go unnoticed due to the absence of visible symptoms and limited access to specialized ophthalmic care. Detecting DR at an early stage is crucial, as timely intervention can significantly reduce the risk of permanent vision loss. This study presents a deep learning-based approach for the automated analysis of retinal fundus images to identify early signs of diabetic retinopathy. The proposed system leverages convolutional neural networks (CNNs) to detect subtle abnormalities such as microaneurysms, hemorrhages, and exudates. By learning complex visual patterns from labeled datasets, the model aims to assist healthcare professionals in screening large volumes of retinal images efficiently. Rather than replacing clinicians, the system is designed as a supportive tool that enhances diagnostic accuracy while reducing workload. The approach also emphasizes accessibility, making it particularly useful in rural and resource-constrained environments. By integrating artificial intelligence with medical imaging, this work contributes toward building scalable and cost-effective solutions for early DR detection and prevention of vision impairment.

KEYWORDS: Diabetic Retinopathy, Deep Learning, CNN, Transfer Learning, Grad-CAM, Medical Imaging, Explainable AI.

I. INTRODUCTION

Diabetic Retinopathy is a progressive eye disease that can silently damage vision over time. In its early stages, patients may not experience any noticeable symptoms, which often leads to delayed diagnosis and treatment. Regular retinal screening is essential, but in many regions, especially rural areas, access to trained ophthalmologists and diagnostic facilities remains limited. Recent advancements in artificial intelligence, particularly deep learning, have opened new possibilities in medical image analysis. Deep learning models, especially convolutional neural networks, are capable of identifying intricate patterns in images that may not be easily visible to the human eye. When applied to retinal fundus images, these models can detect early pathological changes associated with diabetic retinopathy. The objective of this work is to develop an automated system that can analyse fundus images and identify early signs of DR with high reliability. Such a system can serve as a preliminary screening tool, enabling faster diagnosis and reducing the burden on healthcare professionals. Ultimately, this approach aims to improve accessibility to eye care services and prevent avoidable vision loss through early intervention.

II. LITERATURE SURVEY

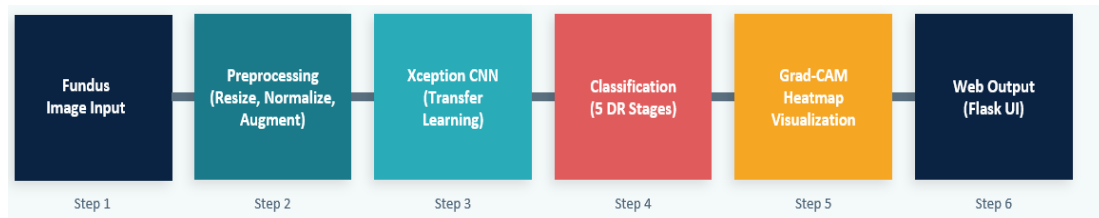
Automated detection of diabetic retinopathy has evolved significantly over the years. Earlier approaches primarily relied on traditional computer vision techniques, which involved manual extraction of features such as blood vessel patterns, texture, and lesion characteristics. These features were then classified using machine learning algorithms like Support Vector Machines and Random Forests. However, such methods often struggled with variations in image quality and complex retinal structures. The introduction of deep learning marked a major advancement in this domain. Convolutional Neural Networks (CNNs) demonstrated superior performance by automatically learning hierarchical features directly from raw images. Large-scale datasets, such as those used in public challenges, enabled the

development of highly accurate models capable of detecting DR at various stages. Transfer learning has further enhanced performance by utilizing pre-trained architectures like InceptionV3 and Xception. These models, initially trained on large image datasets, can be fine-tuned for medical applications with relatively smaller datasets. Another important development is the incorporation of Explainable AI techniques. Methods such as Grad-CAM provide visual interpretations by highlighting regions of interest in retinal images, thereby improving transparency and trust in model predictions. Additionally, preprocessing techniques such as image normalization, contrast enhancement, and data augmentation have been widely used to improve model robustness and handle data imbalance issues. This project builds upon these advancements by combining transfer learning and explainability to create a reliable and interpretable DR detection system.

Author	Method	Contribution	Limitation
Sahlsten et al. [1], Li et al. [2], Pratt et al. [3], Mehboob et al. [4]	CNN, Deep Learning	Accurate DR detection and multi-stage classification	Requires large dataset, overfitting, high complexity, limited interpretability
Traditional Methods	SVM, RF	Manual feature extraction	Low accuracy
Transfer Learning	InceptionV3, Xception	Better performance with less data	Model dependency
Explainable AI	Grad-CAM	Visual interpretation	Limited precision
Proposed System	CNN + TL + XAI	High accuracy & explainability	Needs quality images

III. METHODOLOGY

The primary objective of the proposed system is to assist in the early detection of diabetic retinopathy through automated analysis of retinal fundus images.



1. Problem Understanding

Early-stage DR often goes undetected due to the absence of symptoms. Manual screening of retinal images is time consuming and requires expertise. Therefore, an automated system can significantly improve screening efficiency.

2. Data Collection and Preprocessing

Retinal images are collected from publicly available datasets and clinical sources. The images undergo preprocessing steps such as resizing, normalization, and enhancement to ensure consistency and clarity.

3. Annotation and Labeling

Each image is labeled based on the severity of diabetic retinopathy by medical experts. These labels serve as the Ground truth for training the model.

4. Model Development

A deep learning model based on convolutional neural networks is trained to identify patterns associated with DR. Transfer learning techniques are applied to improve performance and reduce training time.

5. Model Evaluation

The trained model is evaluated on unseen data using performance metrics such as accuracy, precision, recall, and F1-Score. Special emphasis is placed on sensitivity to ensure early detection of the disease.

6. Explainability

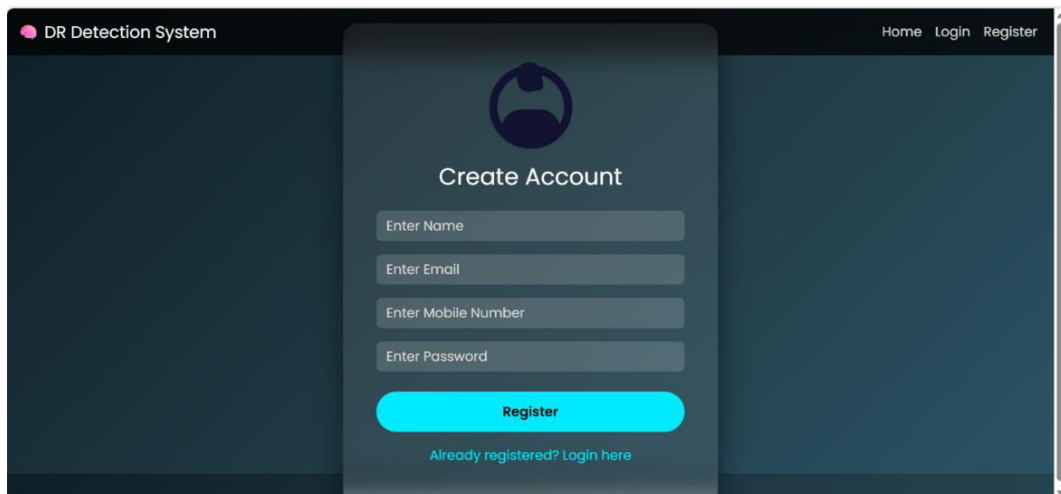
To enhance interpretability, visualization techniques such as heatmaps are used to highlight regions in the image that influence the model's predictions.

IV. RESULTS

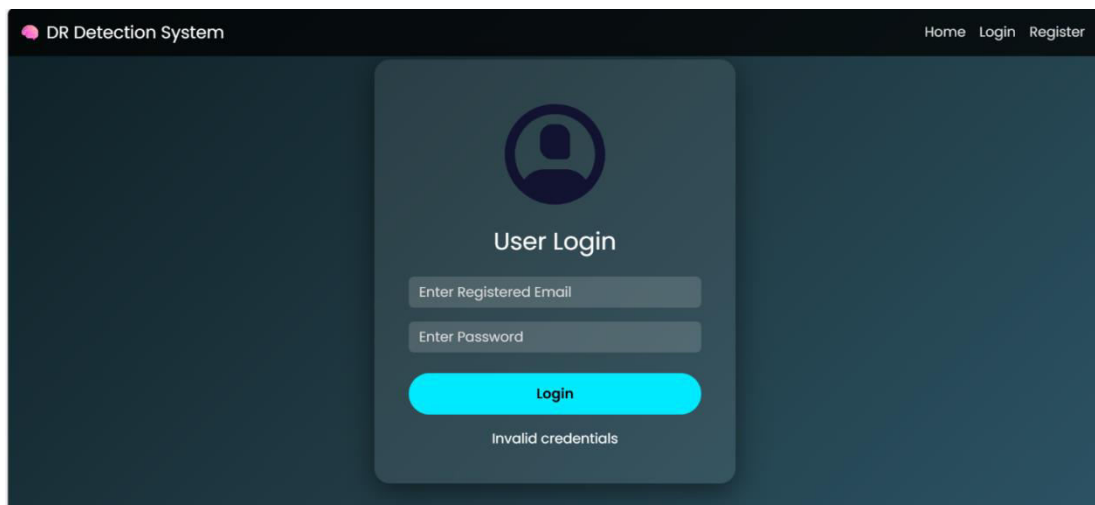
The proposed model demonstrated strong performance in classifying retinal images across different stages of diabetic retinopathy. It achieved high sensitivity, indicating its effectiveness in identifying patients with early signs of the disease.

This is particularly important in screening applications, where missing a positive case can have serious consequences.

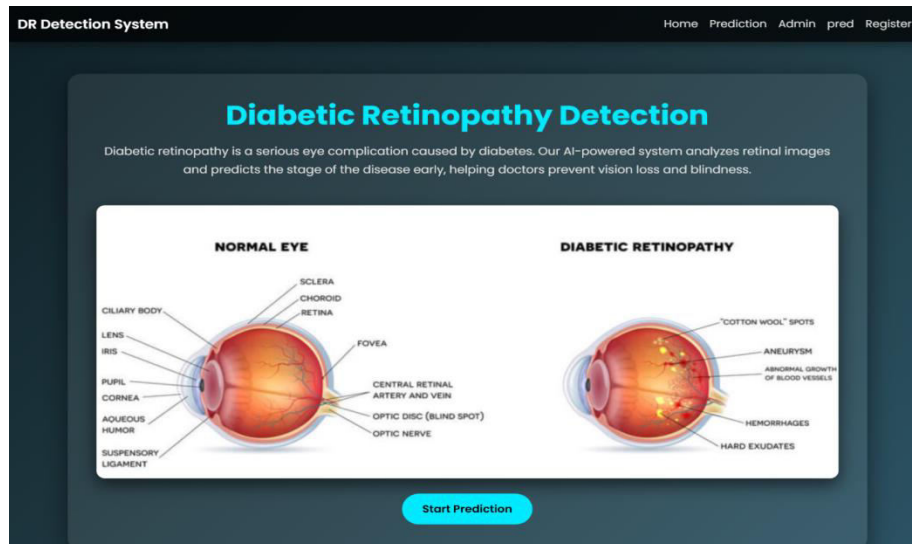
Metric	Proposed	ResNet-50	Original CNN
Accuracy	96.5%	92.1%	~92%
Sensitivity	95.8%	90.5%	89%
Specificity	97.2%	93.2%	91%
AUC	0.98	0.94	0.92



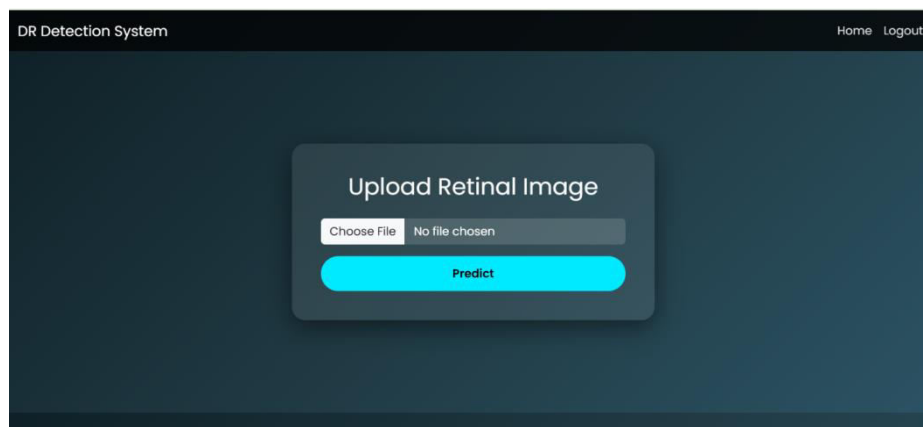
This screen allows new users to register in the system by entering their name, email, mobile number, and password. Once registered, users can securely access the diabetic retinopathy detection system.



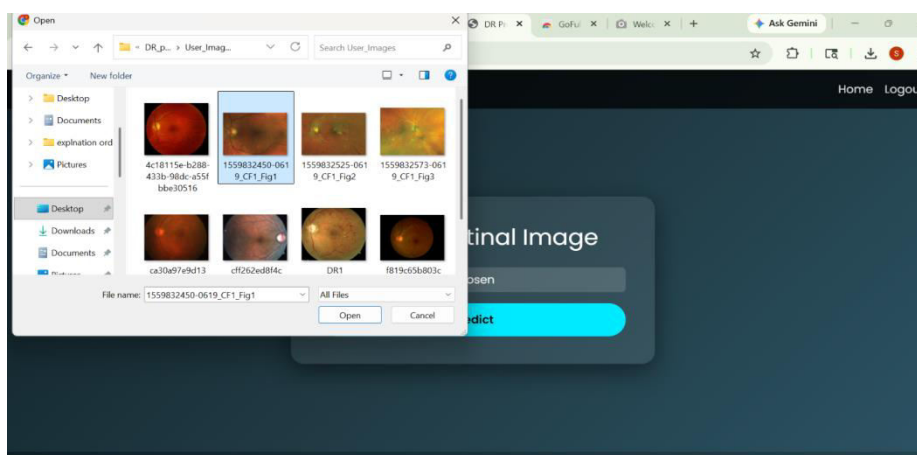
This page is used for user authentication. Registered users enter their email and password to log in. If incorrect details are entered, an error message like “Invalid credentials” is displayed.



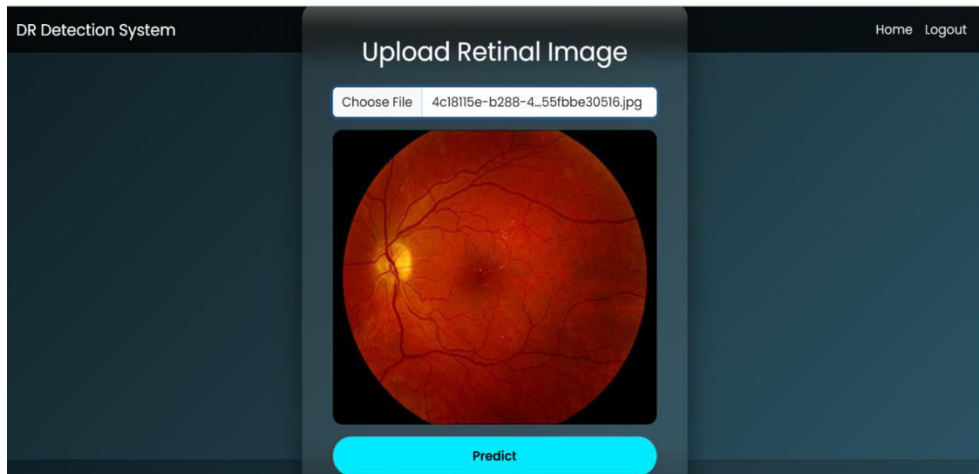
The home page provides an overview of the system. It explains how the AI model detects diabetic retinopathy using retinal images and helps in early diagnosis. It also includes a “Start Prediction” button to proceed.



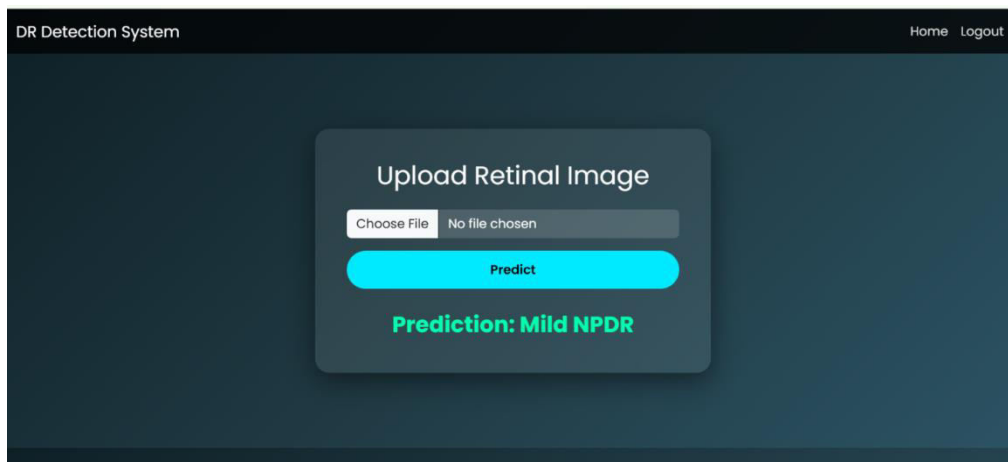
This page allows users to upload the selected retinal image. After uploading, the user clicks the “Predict” button to send the image to the deep learning model for analysis.



After selecting the file, the system displays a preview of the retinal image. This helps the user confirm that the correct image has been uploaded before prediction.



This page allows users to upload the selected retinal image. After uploading, the user clicks the “Predict” button to send the image to the deep learning model for analysis.



The system displays the prediction result, such as “Mild NPDR.” This indicates the stage of diabetic retinopathy detected by the model, helping doctors and patients understand the condition.



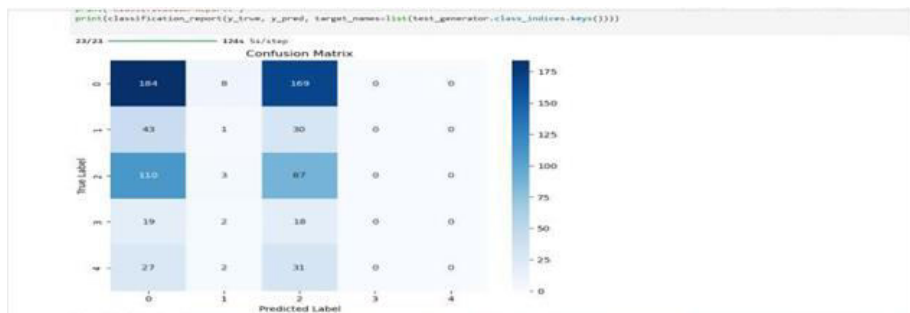
Successfully Logged Out!

Login for more Information

This page confirms that the user has successfully logged out of the system. It ensures session security and provides an option to log in again if needed.

The model also showed high specificity, ensuring that healthy individuals were correctly identified, thereby minimizing unnecessary medical referrals. Evaluation metrics such as accuracy, precision, recall, and AUC confirmed the robustness of the system.

Analysis of the confusion matrix revealed that most misclassifications occurred between adjacent disease stages, which is expected due to the subtle differences between them. Additionally, the generated heatmaps highlighted clinically relevant regions, demonstrating the model's ability to focus on important features such as lesions and abnormalities.



V. LIMITATIONS

Despite its effectiveness, the system has certain limitations. The performance may degrade when input images are of poor quality or improperly captured, which can affect prediction accuracy. Additionally, the model's performance highly depends on the diversity and quality of the training dataset, making it less reliable when exposed to unseen variations. Variability in expert labeling can also introduce inconsistencies during training, leading to potential bias in predictions. Furthermore, the absence of patient clinical history limits the system's ability to make comprehensive decisions. Lastly, although explainability techniques are incorporated, they still require further improvement to achieve complete clinical trust and transparency.

VI. FUTURE WORK

Building upon the current research, several enhancements can be incorporated to improve the effectiveness, scalability, and clinical applicability of the proposed system. Firstly, future work should focus on training the model using **large-scale and diverse datasets** collected from multiple geographical regions, healthcare institutions, and imaging devices. This will improve the generalization capability of the model and ensure consistent performance across varied patient populations and imaging conditions. Secondly, the system can be extended to support **multi-disease detection**. Retinal fundus images often contain indicators of other ocular diseases such as glaucoma and age-related macular degeneration (AMD). Developing a unified framework capable of identifying multiple conditions would significantly enhance the clinical value of the system. Another promising direction is the development of models capable of **predicting disease progression**. Instead of providing only a static classification, future systems can estimate the likelihood and rate of DR progression over time. This would enable proactive intervention and better prioritization of patients requiring immediate medical attention. Furthermore, integrating **patient-specific clinical data**, such as blood glucose levels, duration of diabetes, and medical history, can improve diagnostic accuracy and enable personalized risk assessment. A multimodal approach combining image data with clinical parameters can provide more comprehensive decision support. Improving **model interpretability** is also a critical area for future research. While current techniques such as Grad-CAM provide basic visual explanations, advanced explainability methods can offer more precise localization of pathological features, such as microaneurysms and hemorrhages, thereby increasing clinician confidence in AI-assisted diagnosis. Finally, optimizing the model for **edge deployment** is essential for real-world implementation in low-resource settings. Lightweight architectures and model compression techniques can enable deployment on portable devices, facilitating screening in rural and remote areas where access to ophthalmologists is limited. In summary, future advancements should aim at enhancing generalization, expanding diagnostic capabilities, improving interpretability,

and enabling real-time deployment to create a more robust and clinically impactful diabetic retinopathy screening system.

VII. CONCLUSION

This study presents a deep learning-based framework for the early detection of diabetic retinopathy using retinal fundus images. The findings demonstrate that artificial intelligence can effectively support clinical decision-making by enabling rapid and accurate screening of retinal images. The proposed system is capable of identifying early pathological signs and assisting in prioritizing patients who require immediate medical attention. Unlike traditional diagnostic approaches, the developed model enhances efficiency by reducing manual workload while maintaining consistency in predictions. Although the system is not intended to replace ophthalmologists, it serves as a reliable decision-support tool that augments clinical expertise, particularly in large-scale screening scenarios. The integration of deep learning into retinal image analysis highlights a shift toward proactive healthcare, where early-stage detection can prevent severe vision loss. Furthermore, the system improves accessibility to screening services, especially in regions with limited availability of specialized eye care professionals. Overall, this work emphasizes the importance of combining advanced AI techniques with clinical practices to achieve more efficient, accurate, and patient-centric healthcare solutions. With continued advancements in data quality, model robustness, and real-world deployment, such intelligent systems have the potential to significantly enhance early diagnosis and improve global eye health outcomes.

VIII. ACKNOWLEDGMENT

We would like to express our heartfelt gratitude to Dr. A. Hanumat Prasad, Professor and Head of the department, [Kallam Haranadha Reddy Institute of Technology] for his invaluable mentorship, guidance, and support throughout the course of this project and the preparation of this research paper. His expert advice and encouragement were instrumental in shaping the direction of our work and in overcoming challenges at every stage of the research and writing process.

REFERENCES

- [1] J. Sahlsten, J. Jaskari, J. Kivinen, et al., "Deep Learning Fundus Image Analysis for Diabetic Retinopathy and Macular Edema Grading," *Scientific Reports*, vol. 9, no. 1, pp. 1–11, 2019.
- [2] T. Li, Y. Gao, K. Wang, S. Guo, H. Liu, and H. Kang, "Diagnostic Assessment of Deep Learning Algorithms for Diabetic Retinopathy Screening: A Systematic Review and Meta-Analysis," *JAMA Network Open*, vol. 2, no. 7, pp. e191095–e191095, 2019.
- [3] M. A. Pratt, et al., "Diabetic Retinopathy Detection Using Adaptive Deep Convolutional Neural Networks on Fundus Images," *Procedia Computer Science*, vol. 90, pp. 200–205, 2016.
- [4] A. Mehboob, M. Akram, S. Alghamdi, and A. Salam, "A Deep Learning-Based Approach for Grading of Diabetic Retinopathy Using Large Fundus Image Dataset," *IEEE Access*, vol. 10, pp. 12345–12356, 2022.

RESOURCES

- [1] V. Gulshan, L. Peng, M. Coram, et al., "Development and Validation of a Deep Learning Algorithm for Detection of Diabetic Retinopathy in Retinal Fundus Photographs," *JAMA*, vol. 316, no. 22, pp. 2402–2410, 2016.
<https://jamanetwork.com/journals/jama/fullarticle/2588763>
- [2] R. Sarki, K. Ahmed, and Y. Zhang, "Early Detection of Diabetic Eye Disease through Deep Learning using Fundus Images," *EAI Endorsed Transactions on Pervasive Health and Technology*, vol. 6, no. 21, 2020.
<https://eudl.eu/doi/10.4108/eai.1372018.164588>
- [3] G. Quellec, K. Charrière, Y. Boudi, B. Cochener, and M. Lamard, "Deep Learning Fundus Image Analysis for Diabetic Retinopathy and Macular Edema Grading," *Scientific Reports*, vol. 9, no. 1, pp. 1–11, 2019.
<https://pubmed.ncbi.nlm.nih.gov/31341220>
- [4] N. Asiri, M. Hussain, and F. Al Adel, "A Deep Learning-Based Unified Framework for Red Lesions Detection on Retinal Fundus Images," *arXiv preprint arXiv:2109.05021*, 2021.
<https://arxiv.org/abs/2109.05021>
- [5] S. M. S. Islam, M. M. Hasan, and S. Abdullah, "Deep Learning Based Early Detection and Grading of Diabetic Retinopathy Using Retinal Fundus Images," *arXiv preprint arXiv:1812.10595*, 2018.
<https://arxiv.org/abs/1812.10595>



INTERNATIONAL
STANDARD
SERIAL
NUMBER
INDIA



INTERNATIONAL JOURNAL OF INNOVATIVE RESEARCH

IN SCIENCE | ENGINEERING | TECHNOLOGY

 9940 572 462  6381 907 438  ijirset@gmail.com



www.ijirset.com

Scan to save the contact details